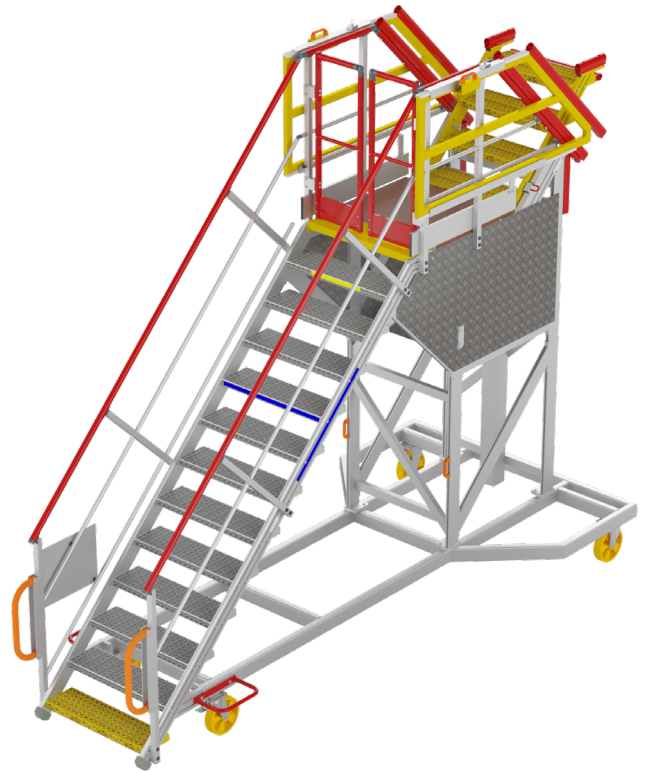


Stepladder for Bulk access - A350



Mobile platform allowing access to door opening controls and Bulk. Height to serve: from 2600 mm to 3500 mm.

Galvanized steel frame equipped with:

- 2 swivel wheels Ø250 with brake at the front, 2 wheels Ø250 fixed at the rear, with polyurethane tyres
- 2 immobilization cranks
- Flat sheet aluminium protecting the height adjustment system of the extension

Platform

- Width: 750 mm x Length: 875 mm
- Coating : Anti-slip plywood - tickness 21 mm
- Adjustable guardrails with rubber protection at the back of the platform to fit the shape of the aircraft
- Height-adjustable staircase integrated on the plane-side platform in order to adapt to several types of aircraft and different maintenance operations.

Capacity of load :
2 peoples + toolboxes

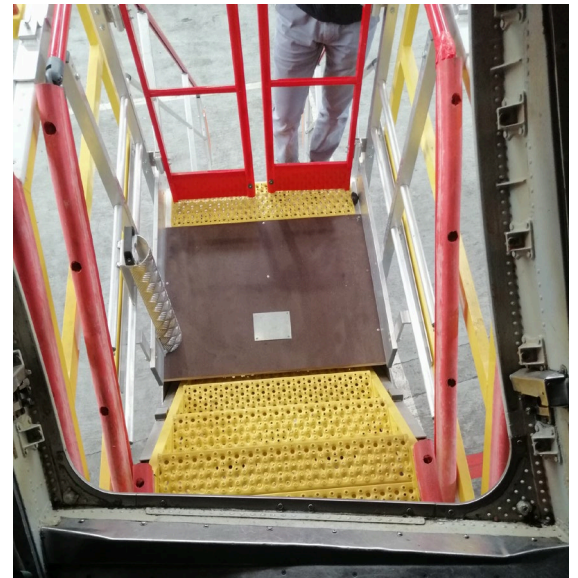


Stepladder for Bulk access - A350



Staircase

- Tilt : 45°
- Anti-slip ribbed steps welded on silt - Useful width 820 mm
- First and last steps yellow lacquered (RAL1018)
- Double safety gate at the entrance of the platform
- Ramp with red lacquered handrail (RAL 3000) and intermediary rail, on the left and right of the staircase
- Handling of the stepladder facilitated by 2 orange handles (RAL 2003)



Staircase extension

- Tilt: 45°
- Yellow lacquered non-slip ribbed steps (RAL1018) welded on silt - Useful width 820 mm
- Height adjustable by hand in three positions thanks to a counterweight and indexing finger system

