

Stepladder for A320 emergency slide access



Stepladder
in height
position

Mobile stepladder for emergency slide access in raw extruded aluminum 100 x 30 mm

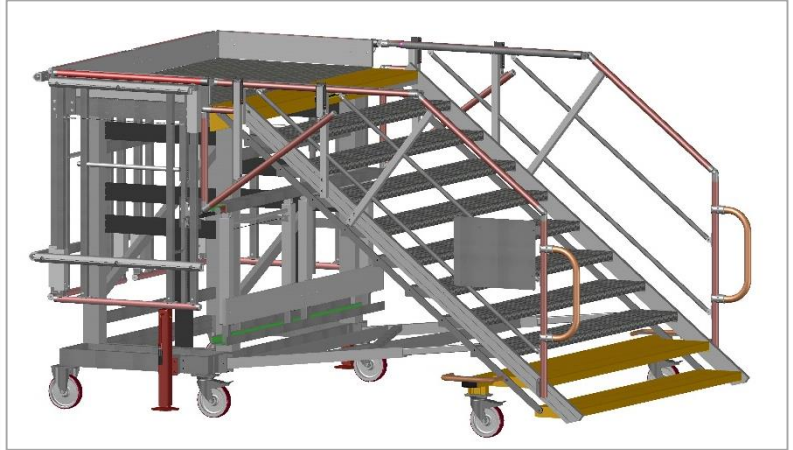
- Height to serve:
from 1800 to 2200 mm
- Width: 2000 mm
- Anti-slip steps thickness
230 mm: the first two and the
last steps yellow lacquered
- Anti-slip ribbed flat sheet
aluminum platform size:
2 060 x 1 000 mm

Independent sliding guardrails
handled by a single person from
floor.

Capacity of load:
2 persons – 250 kg

 **FORTAL**[®]
www.fortal.fr
DIVISION AERO  Made in France

Stepladder for A320 emergency slide access



3D view of stepladder platform with sliding guardrail in low position.



View on rack winch system for variable angle staircase and immobilization cranks.



Ø 200mm swivel wheels with brakes at the front and sides and fixed at the rear
Polyurethane tyres (for workshop or outside)
with curving profile for easier moving.



2 removable guardrails and half sliding on the top of access staircase (operator security) storable under the platform.

