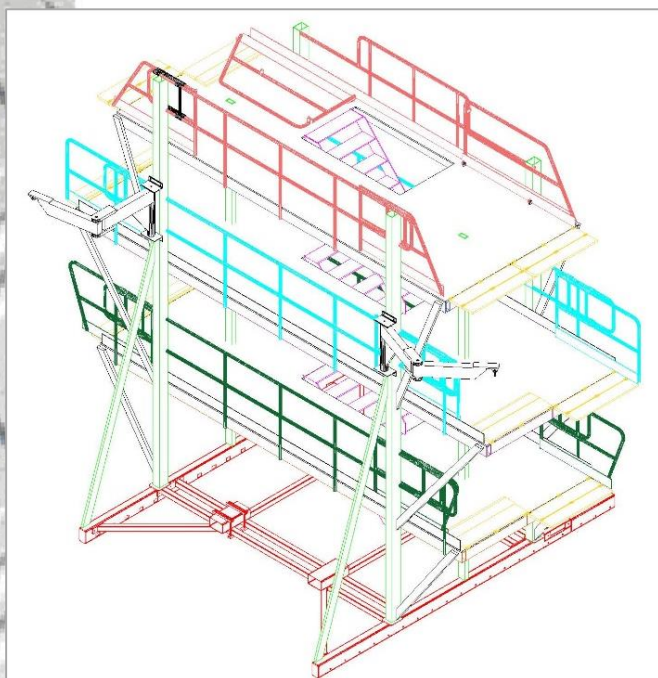


# Maintenance platform for Beluga XL cargo bay



Raw extruded aluminum gangway fixed on steel frame for moving and fixing in airplane cargo bay.

2 lifting arms to set up « hinges » of cargo bay door

Overall dimensions: 6.70 x 2.70 x 7.50 m

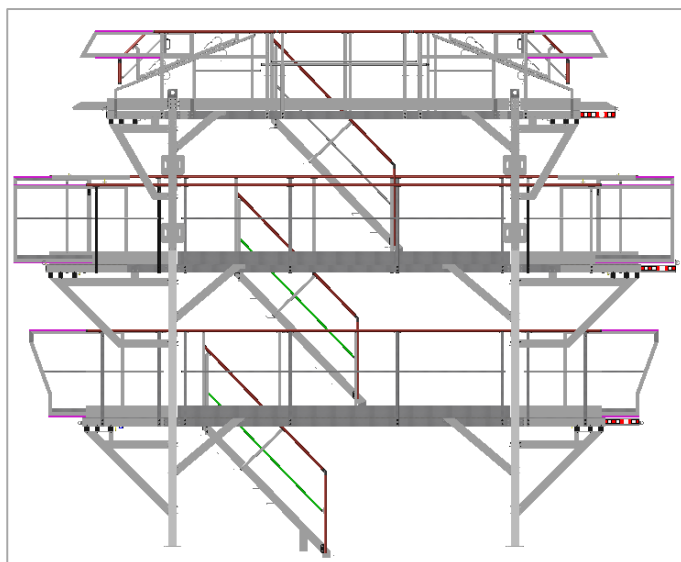
3 platforms levels on 1.60 – 3.50 and 5.40 meters height. 3 access ladders – useful width 800 mm – anti-slip ribbed aluminum steps depth 261 mm .

Capacity of load: 6 persons on maintenance platform – 4 persons per level – 1 person per draw-out extension.

Complies to NF EN 14 122



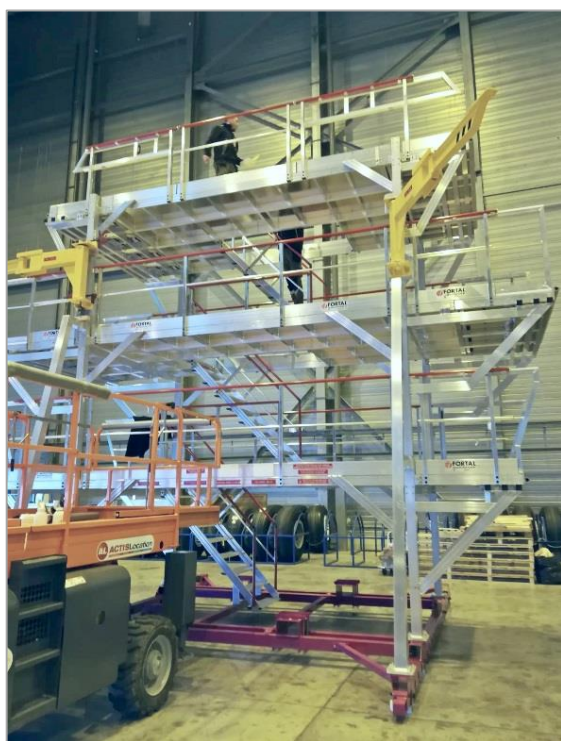
# Maintenance platform for Beluga XL cargo bay



Width platforms: 2.70 m  
Length platforms: 1<sup>st</sup> level: 6.60 m –  
2<sup>nd</sup> level : 7.50 m – 3<sup>th</sup> level: 6.00 m  
Aluminum ribbed coating thickness 4.4 mm

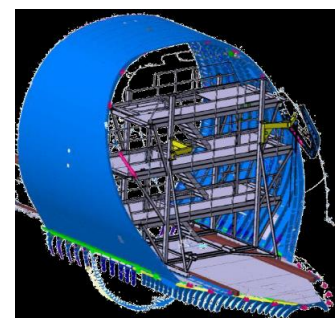


Foam yellow/black protections on ceiling structures. Peripheral and staircases protection guardrails composed with red lacquered handrail (RAL 3000), intermediary rail and baseboard



Each platform extremity is equipped with sliding draw-out extension – 0.42 m to fit different cargo bay area.  
Sliding guardrails with indexing extremities.  
Fold-down guardrail on 3<sup>th</sup> platform.  
Rubber protection on each external edges (draw-out extensions).

3D view of platform in cargo bay



 **FORTAL**<sup>®</sup>  
[www.fortal.fr](http://www.fortal.fr)  
DIVISION AERO  Made in France

Head office & Plants : ZI du Muckental – F – 67140 BARR  
Phone +33(0)3 88 58 53 53 – Fax +33(0)3 88 58 53 54  
[www.aeronautique.fortal.fr/en](http://www.aeronautique.fortal.fr/en) – [info@fortal.fr](mailto:info@fortal.fr)