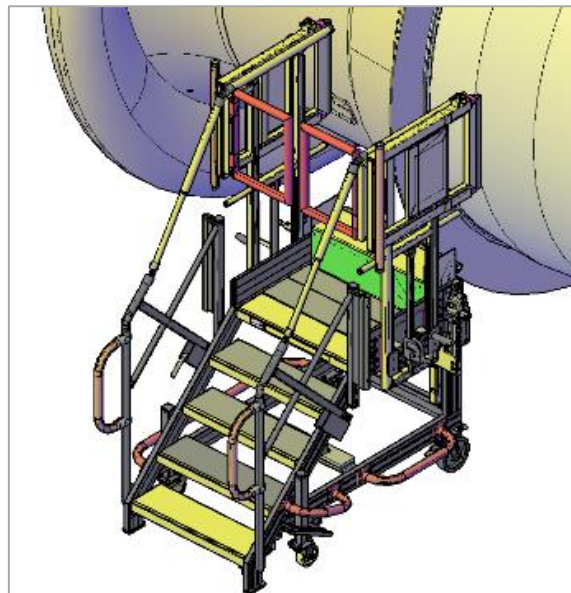
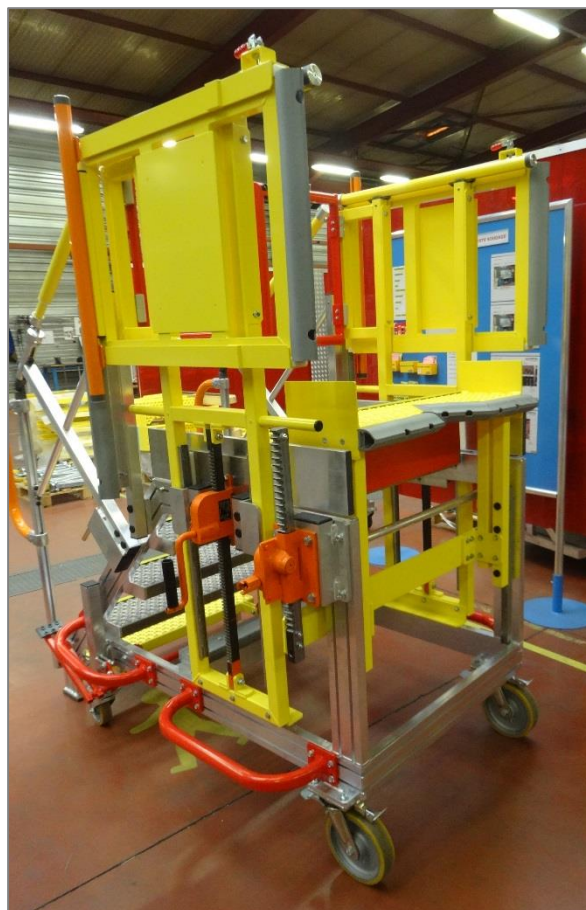


**Mobile platform
for motor
assembly access
« core engine »
optional equipment**



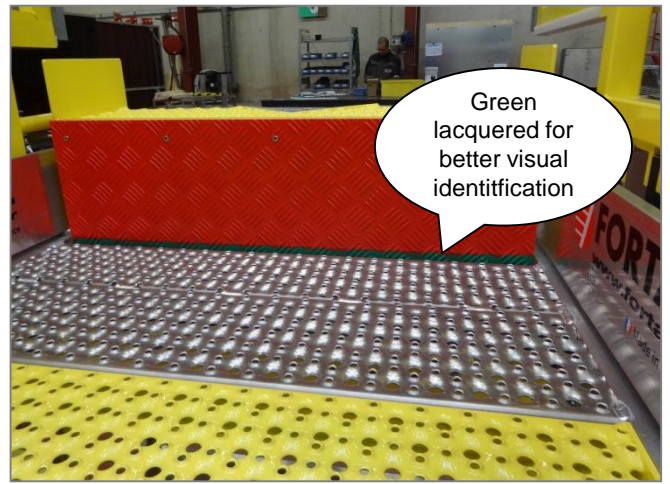
Example of use



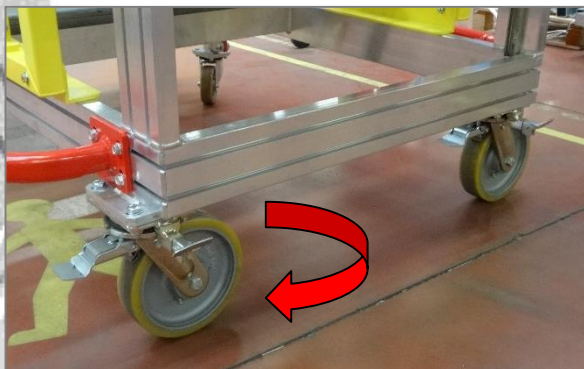
Additional project form of F891400695 – april 2016



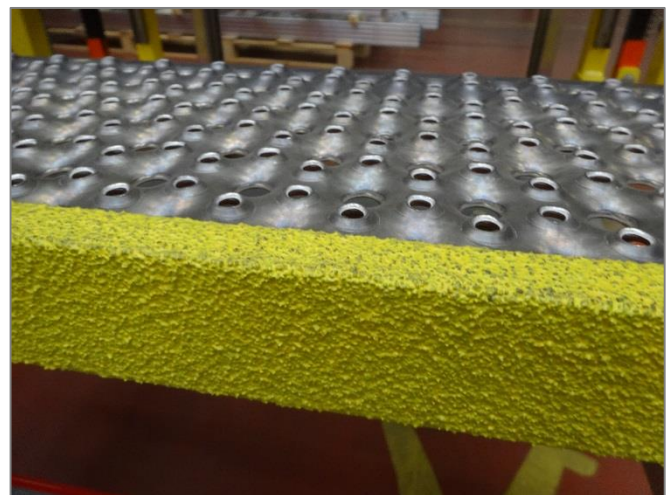
Mobile platform for motor assembly access « core engine » optional equipment



Foldaway rear step: risers red and green
lacquered (visual identification during the
climb/descent)
Grating step yellow lacquered



Swivel wheels with brakes
4 x 90° at the rear for easy moving



Epoxy resin step nosing – anti-slip coating
type « sécurigriss »